

DEAR READER,

THE PAST YEAR HAS SEEN STRONG GROWTH FOR SODECON. WE FIND THAT MANY CLIENTS ARE SATISFIED WITH OUR WORK AND THAT THIS RESULTS IN MORE ORDERS. IN ORDER TO BE ABLE TO CONTINUE WITH THE VARIOUS PROJECTS, WE WENT IN SEARCH OF A CONSTRUCTION SITE MANAGER. WE ARE THEREFORE VERY PLEASED TO WELCOME TOM NACHTERGAELE TO OUR TEAM! WE ALSO WANT TO EXPAND OUR TEAM: SEE OUR VACANCIES LATER IN THIS NEWSLETTER. A LARGER TEAM ALSO REQUIRES FURTHER PROFESSIONALISATION. THAT IS WHY WE HAVE ALSO STARTED A PROJECT TO OBTAIN ISO9001 AND 45001 CERTIFICATION IN 2022. IN THIS WAY, WE WANT TO TAKE A STEP FORWARD AS AN ORGANISATION IN THE FIELD OF QUALITY AND SAFETY. IN THIS NEWSLETTER, WE PRESENT A FEW OF OUR PAST PROJECTS: A LARGE EXCAVATION PROJECT AND A PROJECT DEVELOPMENT PROJECT, AND WE GIVE THE FIRST FINDINGS OF OUR PFAS RESEARCH PROJECT THAT WE ARE CONDUCTING TOGETHER WITH VITO.

WE WISH EVERYONE THE BEST FOR THE COMING YEAR!

HANS AND WOUTER

SODECON

SODECON is an innovative, knowledge-driven company specialized in soil and groundwater remediation providing consultants, project developers, companies and private persons with sustainable, economic solutions to their soil issues.



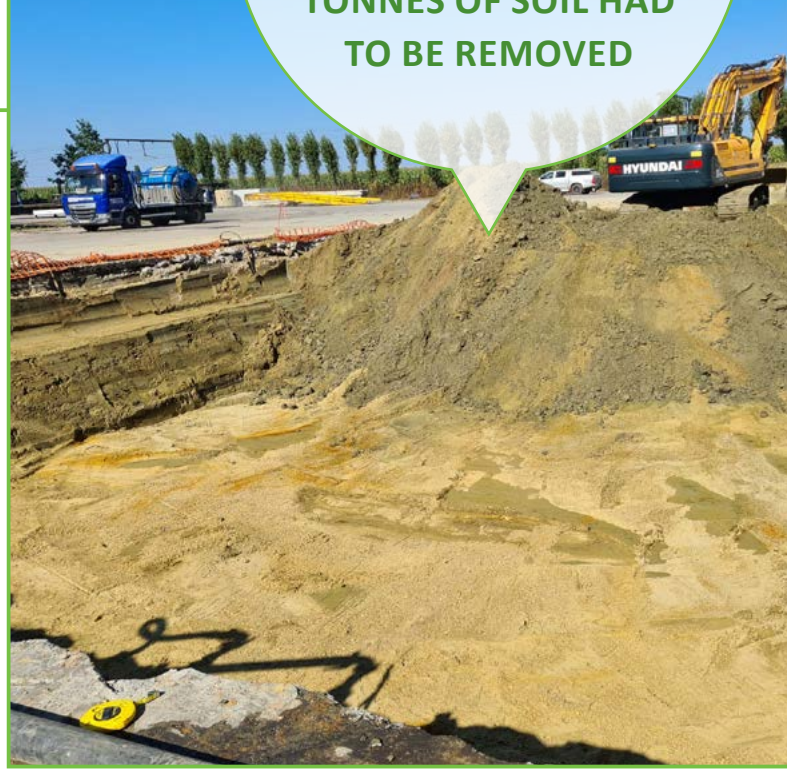
info@sodecon.be

SODECON RECENTLY CARRIED OUT A PROJECT IN WHICH MORE THAN 6,000 TONNES OF SOIL HAD TO BE REMOVED

MAJOR ASBESTOS AND MINERAL OIL REMEDIATION

Although we at Sodecon are specialised in in situ projects, it is not always possible to treat soil on site and excavation is the best option.

Sodecon recently carried out a project in which more than 6,000 tonnes of soil had to be removed. 2,800 tonnes of soil contaminated with mineral oil were removed for biological and thermal treatment and 3,800 tonnes of soil contaminated with asbestos were excavated and transported to a disposal site. For the asbestos work, the necessary safety measures were taken, such as conducting air measurements, wearing the necessary PPE, fencing off the work area, spraying water and providing a decontamination unit. Good logistical planning allowed the project to be completed in a short time.



PROJECT DEVELOPMENT WITH VARIOUS CONTAMINANTS

As part of a redevelopment project in the village centre of Londerzeel, the project developer engaged Sodecon to advise them on the contamination on the site.

Prior to the construction works, a soil remediation was carried out in which a mineral oil contamination system was excavated. Subsequently, a water purification system was installed to purify the groundwater from the dewatering. The dewatering attracted chlorinated solvent pollution from a former dry cleaner in the area. By purifying the drainage water, the works could continue without problems.

There is nothing to do but to cut a piece out and replace it with new soil.

EXCAVATION

Ready to disposal

Doctor Sodecon, I have swallowed some asbestos



Mr. Asbestos is sharp, but oh so dangerous.

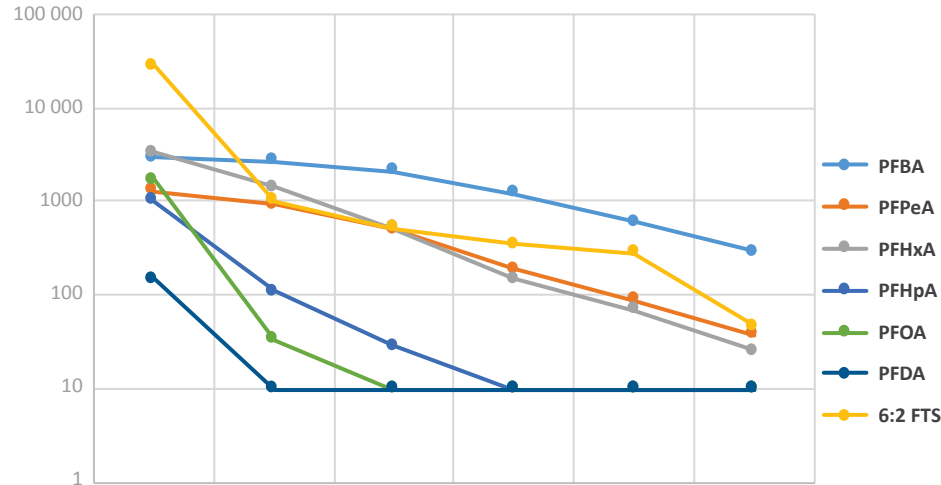
How are they going to get me out of here?

PFAS EXPERTISE

Sodecon is currently carrying out lab tests in cooperation with VITO to evaluate the sorption capacity of 4 different sorbents for 5 different wastewaters.

The first phase of the project has been completed and the first results are in. Some interesting findings:

- A TOP assay analysis was performed on all wastewaters: this analysis converts non-measurable PFAS precursors into measurable PFAS components. This analysis shows that 1.5 to 5 times more PFAS is present in the wastewaters compared to ordinary wastewater analysis.
- There is not one sorbent that comes out best from the tests. Depending on the type of wastewater and the PFAS component, different sorbents are best suited.
- The shorter the carbon chain, the lower the sorption capacity.
- Perfluorosulphonic acids (such as PFOS) sorb better than perfluoric acids (such as PFOA).



In the next phase, we will start column tests for the different sorbents in order to simulate the operation of a real filter set-up.

We are also faced with the PFAS problem in practice. For two soil remediation projects, we are busy cleaning PFAS-contaminated groundwater and for another project, we are evaluating the in-situ stabilisation of PFAS... to be continued.

THINK WATER

For the second year in a row, we have the pleasure of teaching at the University of Antwerp for the master after master 'Think water'. In our class we discussed 2 projects in which we stimulate the natural degradation of pollution by injection of nutrients.

VACANCY

We are looking for someone to assist us administratively and someone to elaborate and execute projects.

[Check de vacatures op onze website for: administrative assistant and project engineer!](#)



NEW EMPLOYEE

Since early November, TOM NACHTERGAELE has joined our team as construction site manager. Tom has 17 years of experience in the sector as an environmental supervisor and is a serious addition to our team! Welcome Tom!

CONTACT

DO YOU WANT TO KNOW WHAT SODECON CAN DO FOR YOU IN THE FUTURE? OR DO YOU HAVE A QUESTION ON A SPECIFIC PROJECT IN WHICH WE CAN HELP YOU WITH OUR EXPERTISE?

DO NOT HESITATE TO CONTACT US.